

# XEBEC®

ISO9001 Certified

XEBEC products are manufactured in a plant certified by ISO9001, the international standard of quality control and assurance.

# Cutting Fiber™

Patent Pending

## Hand Tool Brush

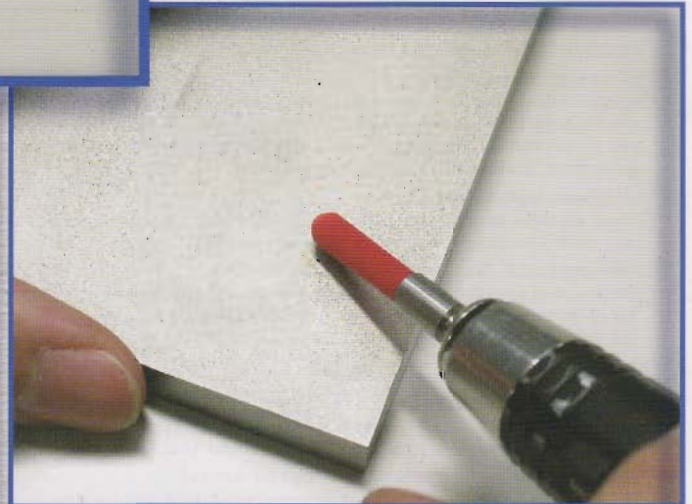
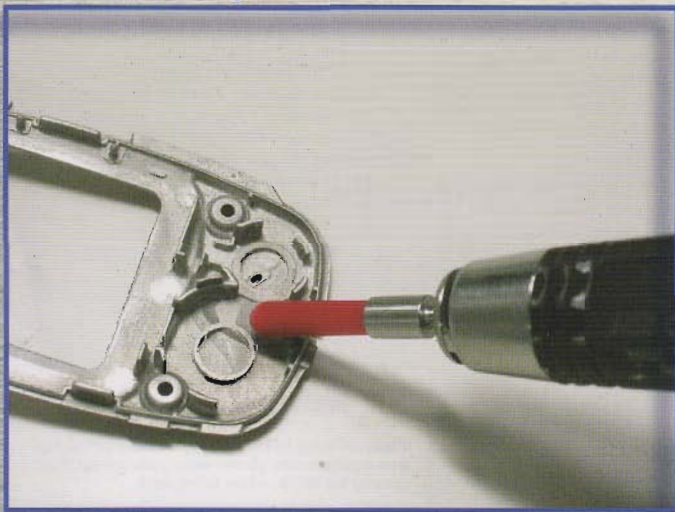
Please use below  
the maximum revolutions of 12,000 rpm.

*We made our ceramic abrasive stones  
into fine alumina fiber rods.*

One fine alumina fiber rod is made from 1,000 alumina fiber filaments (ALF).  
The tips on each of the 1,000 ALFs are the cutting edges,  
giving each fiber rod 1,000 continuous cutting edges.

### EDM Scale Removal from Molds

### Minute deburring



Before finishing



After finishing



## Features

- \* The tips of the fine alumina fiber rods have superior grinding power
- \* Can greatly improve surface smoothness in a short time
- \* Soft to the touch, prevents undulations in the work
- \* Less clogging with the self-sharpening action of the fiber rod tips
- \* Can be used in dry or wet processing

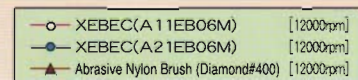
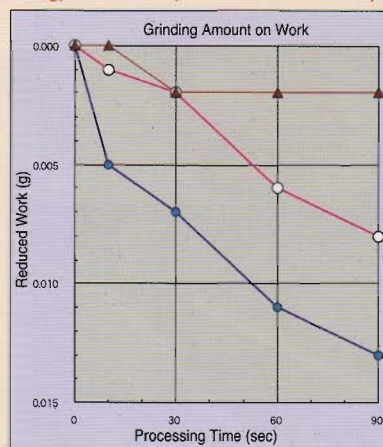
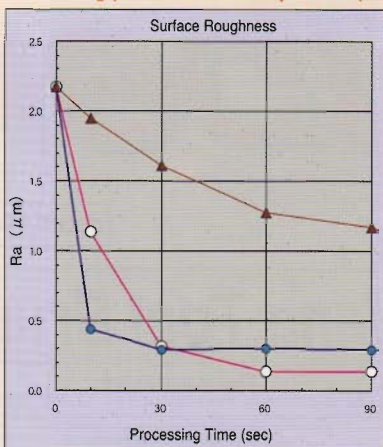
## Main Uses

- \* EDM Scale Removal from Molds
- \* Modifying molds
- \* Deburring after forming of precision parts
- \* Deburring after machine processing of precision parts
- \* Surface finishing (removing post-processing marks and scales)

## Grinding Performance

This is a comparison in grinding performance with diamond-ingrained abrasive nylon brush (#400)

<Grinding performance comparison (wet processing) on NAK80 (EDM treated surface)>



※XEBEC Cutting Fiber improves surface smoothness in a short time.

※XEBEC Cutting Fiber has superior grinding ability.

## Line up

A11 : Easy to fit, suitable for minute deburring.

A21 : More rigid than A11, superior grinding efficiency.

Type	Product Code	Fine Alumina Fiber Rod (color)	Diameter	Fine Alumina Fiber Rod Length	Axis Core Diameter
End	A 11-EB06M	A 11 (Red)	φ 6mm	20mm	φ 3mm
End	A 21-EB06M	A 21 (White)	φ 6mm	20mm	φ 3mm

※ We are planning more additions and expansions to our lineup. Please visit our homepage for details.

## <Precautions Upon Usage>

### 【Pre-operation Inspections】

- Conduct a test run for one minute before starting operation, and three minutes after changing the brush, to check for abnormalities, such as vibrations, or looseness of the brush axis joint. Even if there are no abnormalities during the test run, if you notice anything unusual such as vibrations during usage, please stop the operation immediately; breakage, deformation, or damage to such parts as the brush fiber rods and the axis.

### 【Maximum Revolutions】

- Please use below the maximum revolutions of 12,000 rpm. Usage above the maximum may be dangerous because it may result in breakage to such parts as the brush fiber rods and the axis.

### 【Grinding Load, Depth of Cut】

- Usage with an excessive load (depth of cut) may not only give less than optimal results, but may also lead to breakage and scattering of fine alumina wire rods. They are especially prone to occur when processing edges and uneven areas; it is therefore necessary to process with low enough revolutions and a lighter load.

## <Directions for Tool Use>

### 【Polishing Flat Surfaces】

- Attach to a hand tool, and apply brush to work surface at an approximate 45 degrees angle.
- Apply as constant a load as possible with the brush to the work, and keep the depth of cut to a minimum (under 1mm).

### 【Polishing Edges and Deburring Uneven Areas】

- When polishing edges and deburring uneven areas, please work with lower revolutions and a lighter load. Also, please do not apply excessive pressure on the edges with the sides of the fiber rods.

### 【Bristle Length】

- With usage over time, the overall length of the fine alumina fiber rods (bristle length) may shorten, resulting in more grinding power but less easy to fit; please adjust the grind and fit by decreasing the revolutions and load (depth of cut).

### 【Truing / Dressing】

- Press the tip of the rotating brush against some polishing paper stuck onto a board in order to adjust the form of the brush. Please do the same for the dressing as well.

### 【Dry / Wet Processing】

- XEBEC Cutting Fiber can be used for both dry and wet processing. Please use a dust collecting device to collect any dust produced during dry processing.

## <Safety measures for the Worker>

### 【Protection】

- Please always wear protective glasses, gloves, and masks when working. Also, wear long sleeves, and close all cuffs and hems of your underwear so that your skin is not exposed.

### 【Beware of Grinding Powder】

- Grinding powder and burrs may scatter within the area around the work as the brush revolves; please use a dust collecting device to collect the dust that is produced during dry processing.

### 【Caution to Your Surroundings】

- The area around your work is hazardous due to flying pieces of fiber rods from the brush and grinding powder; please enclose your working area to prevent other people from entering, or have the surrounding people wear protection as well.

### Warning

Please always follow the above instruction and precautions, and please wear your protective gear at all times, when using tool.

Please visit our homepage for details. ——— URL <http://www.xebec-tech.co.jp>

**XEBEC®** XEBEC TECHNOLOGY CO.,LTD.

Head Office 4-3-3 Koujimachi Chiyoda-ku Tokyo, Japan  
 Phone.+81-3-3239-3481 FAX.+81-3-5211-8964  
 URL <http://www.xebec-tech.co.jp>  
 E-mail [xebec@mba.sphere.ne.jp](mailto:xebec@mba.sphere.ne.jp)

Factory and R/D 4061-1 Minami-Minowa-mura Kamiina-gun  
 Nagano,Japan  
 Phone.+81-265-73-1523 FAX.+81-265-77-1847

Your order :